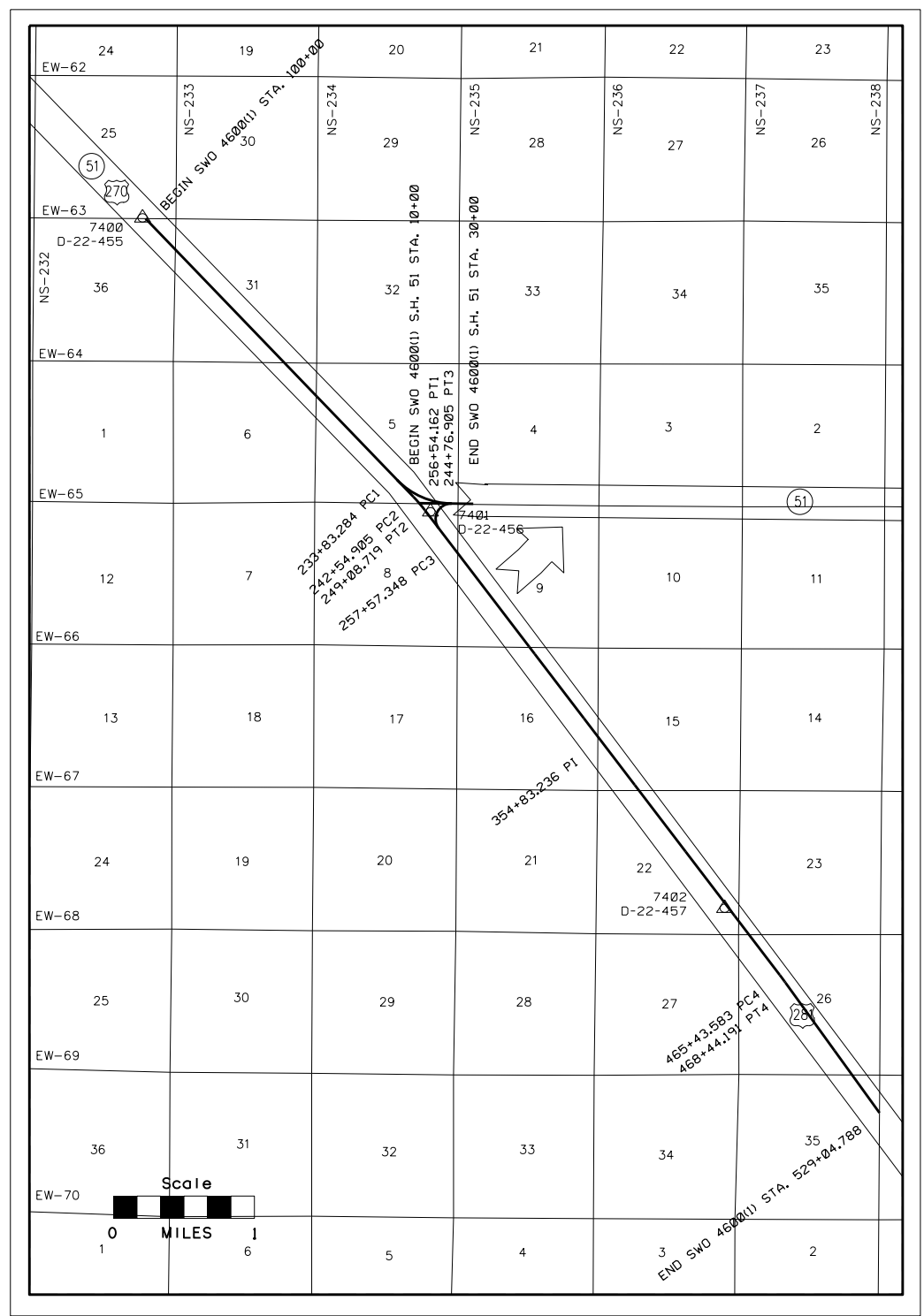


INSET



Network Adjustment Report

Adjustment Settings

Set-up Errors  
 CNES  
 Error in Height of Antenna: 0.000 ft  
 Centering Error: 0.000 ft  
 Circumference Display

Horizontal:  
 Propagated Linear Error (R): 0.000 ft  
 Constant Term (C): 0.000 ft  
 Scale on Linear Error (S): 1.000

Three-Dimensional  
 Propagated Linear Error (R): 0.000 ft  
 Constant Term (C): 0.000 ft  
 Scale on Linear Error (S): 1.000

Adjustment Statistics

Number of Iterations for Successful Adjustment: 2  
 Network Redundancy Factor: 1.00  
 Chi Square Test (95%): Passed  
 Precision Confidence Level: 95%  
 Degrees of Freedom: 108

Post-Processed Network Statistics  
 Reference Factor: 1.50  
 Redundancy Number: 108.00  
 A Priori Error: 12.50

Control Point Constraints

Point ID	Type	North x (US survey foot)	East y (US survey foot)	Height z (US survey foot)	Constraint
207	Grid				Fixed
CANADIAN	Grid				Fixed
CANADIAN	Local	Fixed	Fixed		Fixed
OKHP	Local	Fixed	Fixed	Fixed	Fixed
OKCL	Local	Fixed	Fixed	Fixed	Fixed
OKPE	Local	Fixed	Fixed	Fixed	Fixed

Fixed = 0.000005 US survey foot

Adjusted Control Coordinates

Point ID	Latitude	Longitude	Height (US survey foot)	Height Error (US survey foot)	Constraint
207	N23°27'29.20788"	W98°41'23.17328"	1832.526	7	c
CANADIAN	N30°00'11.64681"	W98°37'47.96903"	1901.508	7	11.e
D-22-455	N30°07'11.88250"	W98°31'43.98297"	1830.740	0.360	
D-22-456	N30°07'25.69411"	W98°40'49.11773"	1814.251	0.408	
D-22-457	N30°07'01.68134"	W98°40'49.22917"	1762.876	0.203	
D-22-511	N39°58'30.48448"	W98°42'34.33751"	1811.402	0.218	
D-22-512	N39°58'01.18978"	W98°44'02.46437"	1818.068	0.251	
D-22-521	N33°27'48.01993"	W98°39'26.93466"	1800.222	0.299	
OKHP	N30°49'40.88134"	W98°38'28.84177"	1771.128	7	11.h
OKCL	N25°28'59.34860"	W98°38'01.24719"	1544.285	7	11.h
OKPE	N30°16'34.46478"	W97°49'07.97610"	1070.979	7	11.h